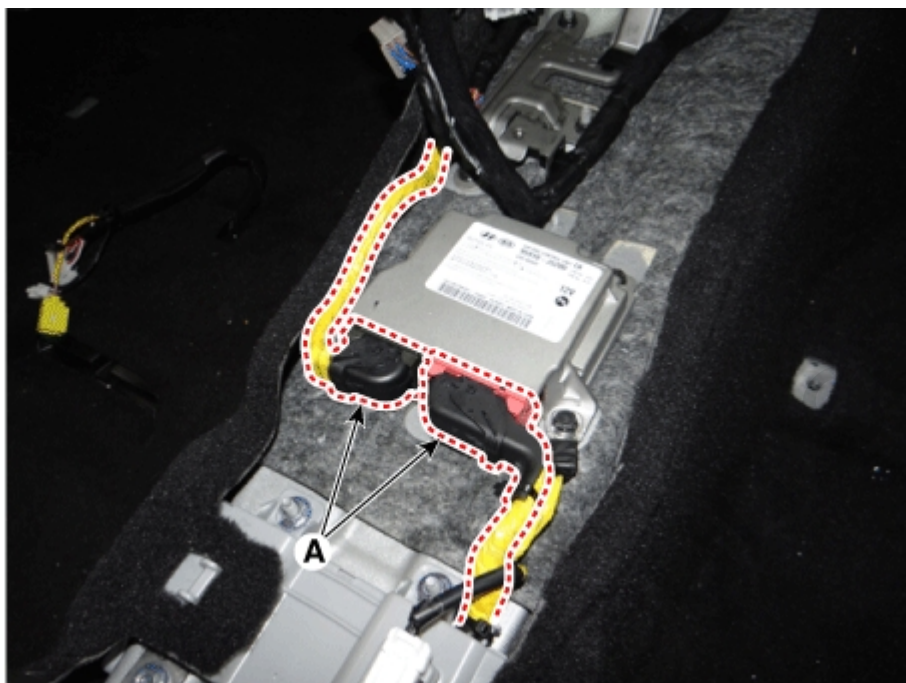


Please rate this document after reviewing at the bottom of this page.

## REMOVAL

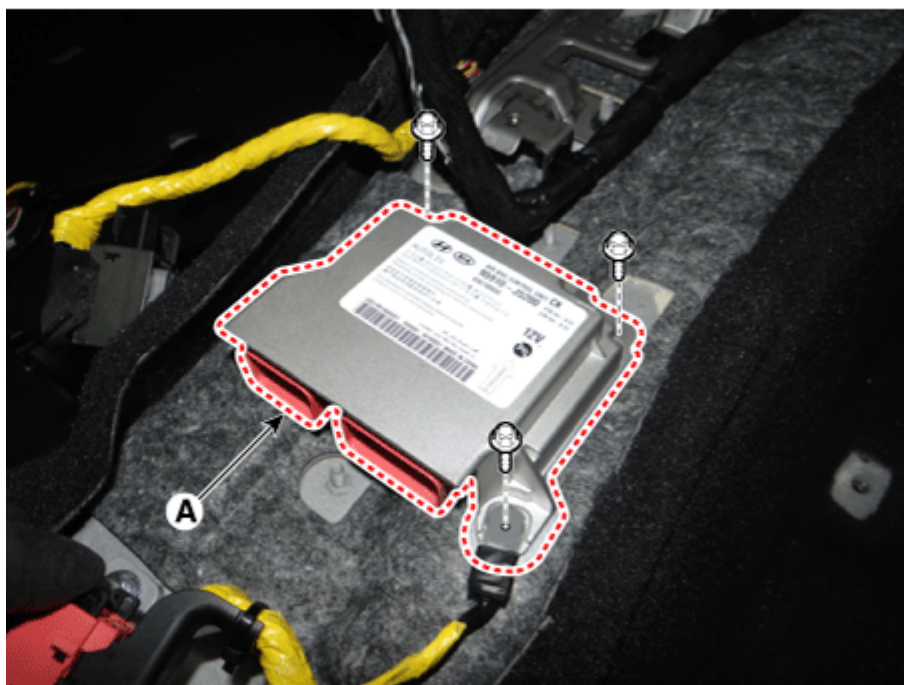
1. Disconnect the negative battery terminal and wait for at least thirty seconds before beginning to work.
2. Remove the floor console assembly.  
(Refer to Body - "Floor Console Assembly")
3. Disconnect the Supplemental Restraint System Control Module (SRSCM) connector (A).



4. Loosen the bolt and nuts and then remove the Supplemental Restraint System Control Module (SRSCM).

### **CAUTION**

Switch "OFF" the ignition when removing or installing SRSCM or other SRS components to avoid accidental airbag deployment.



## INSTALLATION

1. Remove the ignition key from the vehicle.
2. Disconnect the negative battery terminal and wait for at least thirty seconds before beginning to work.
3. Install the SRSCM with the SRSCM mounting bolt and nuts.

**Tightening torque :**

9.4 - 13.5 N·m (0.96 - 1.38 kgf·m, 6.9 - 9.9 lb·ft)



4. Connect the SRSCM harness connector.
5. Install the floor console assembly.  
(Refer to Body - "Floor Console Assembly")
6. Reconnect the negative battery cable.
7. After installing the SRSCM, confirm proper system operation:  
Switch ON the ignition. The SRS indicator light should turn on for about six seconds and then off.

## VARIANT CODING

After replacing the SRSCM, the "Variant Coding" must be performed.

### NOTICE

- 1) During the SRSCM variant coding mode, the airbag warning lamp periodically blinks (ON: 0.5 s, OFF: 0.5 s) until the coding is completed properly.
- 2) If the variant coding is failed, DTC B1762 (ACU Coding Error) will be displayed and the warning lamp will be turned on.  
In this case, perform the variant coding procedure again after confirming the cause in "DTC Fault State Information".  
Variant Coding can be performed up to 255 times, but if the number of coding work exceeds 255 times, DTC B1683 (Exceed Maximum coding Number) will be displayed and SRSCM must be replaced.
- 3) If the battery voltage is low (less than 9V), DTC B1102 will be displayed. In this case, charge the battery before anything else, and then perform the variant coding procedure.  
DTC B1762 (ACU Coding Error) and B1102 (Battery Voltage Low) may be displayed simultaneously.

## Variant coding Procedure

### ■ On-Line method on KDS

1. Switch "OFF" ignition, and connect KDS.
  2. With ignition "ON" & Engine "OFF", select vehicle name and airbag system.
  3. Select Variant coding mode.
  4. Follow steps on the screen as below.
- 1) Initial ACU Variant Coding

## ■ ACU/SRSCM Variant Coding

## ● [ ACU/SRSCM Variant Coding ]

This function is to alter the setting of ECU according to it's specification when an ACU/SRSCM is replaced.

## ● [ Condition ]

1. IG.ON

Press **[OK]** button to continue.

OK

Cancel



Do not touch any system buttons while performing this function.

2) Enter VIN Code

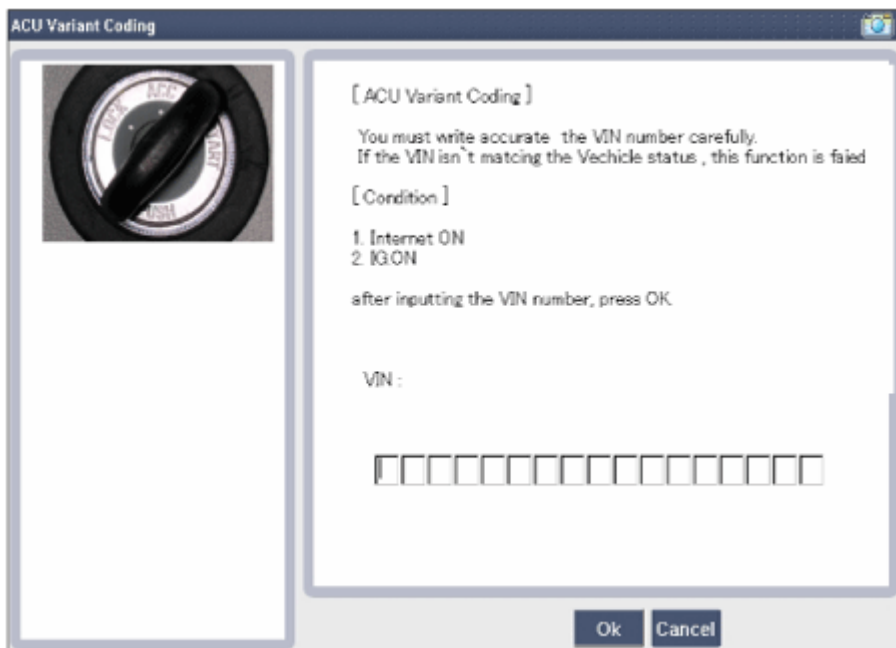


Fig.2

3) Processing variant coding - 1

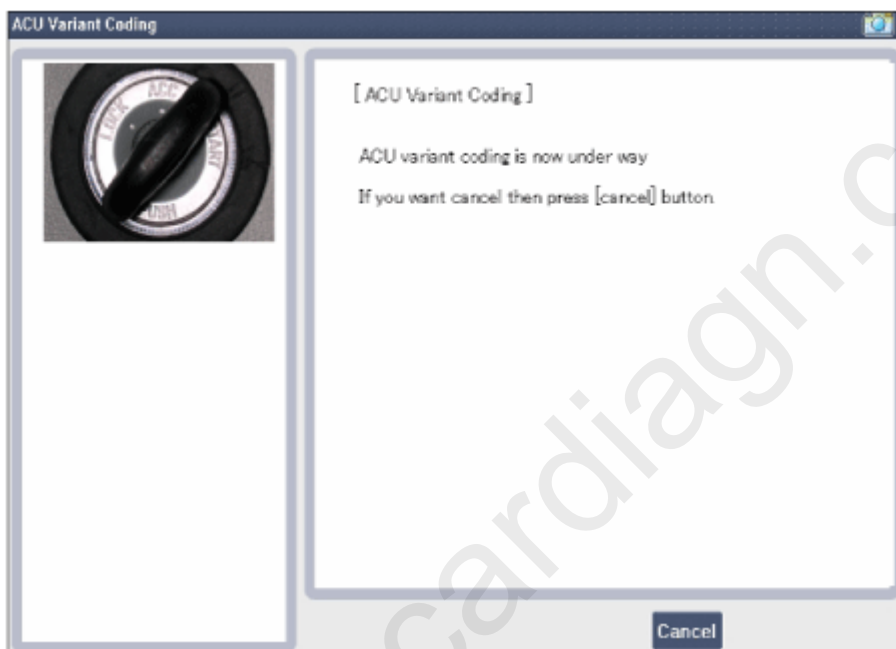


Fig.3

4) Processing variant coding - 2

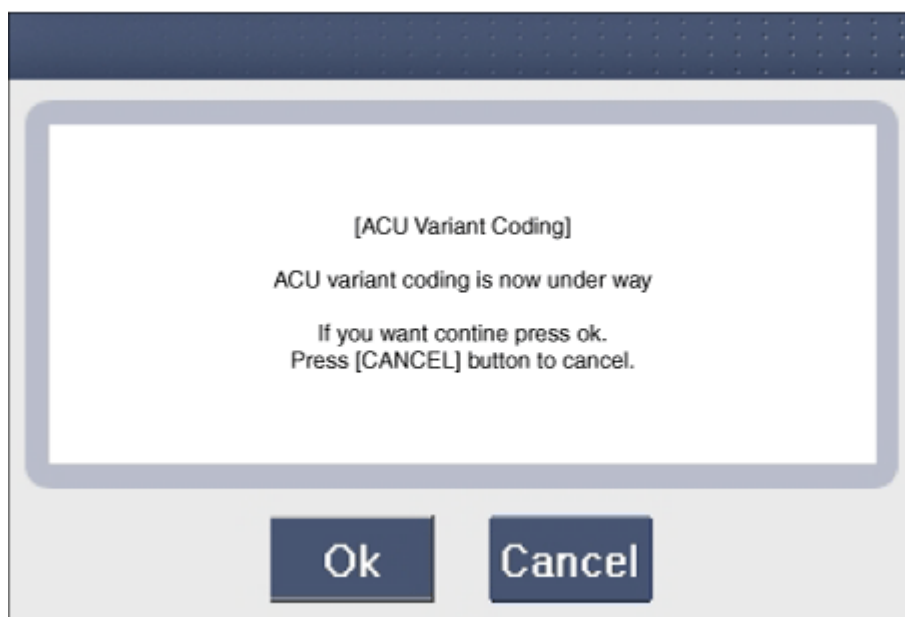


Fig.4

5) Variant coding is completed

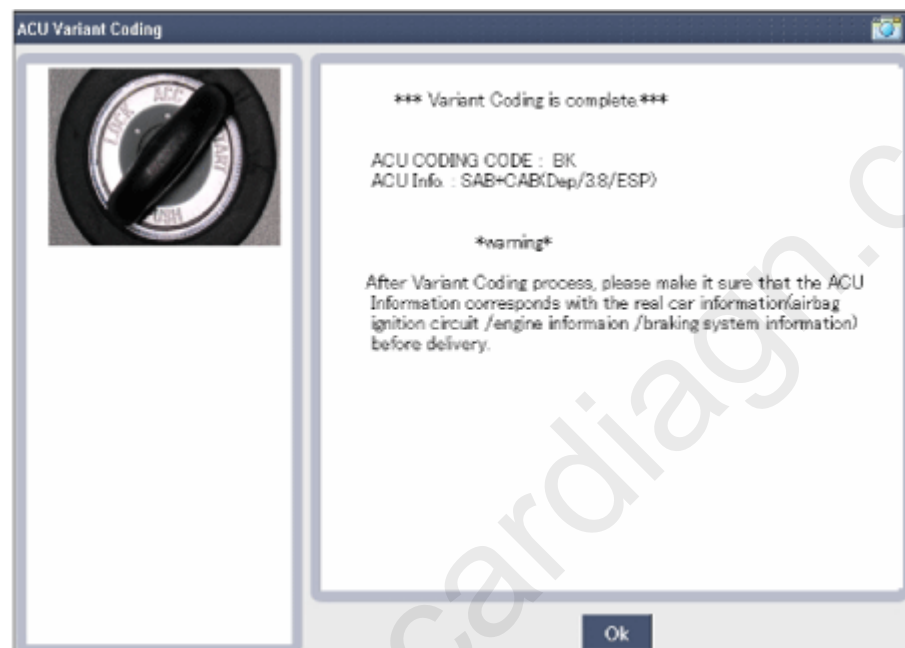


Fig.5

### NOTICE

1) This screen is displayed when the variant coding is attempted again on the SRSCM that has already performed variant coding.

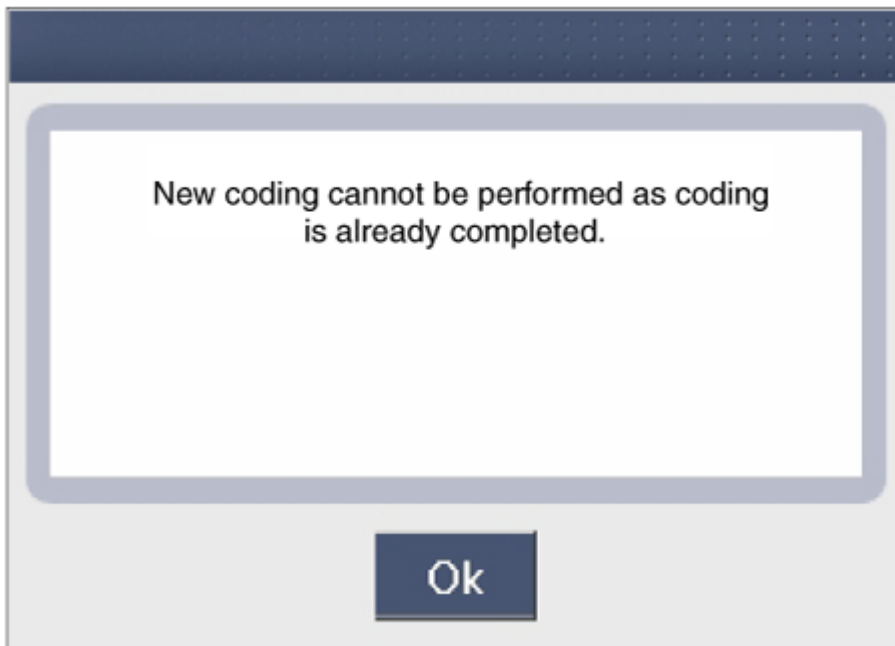


Fig.6

2) Communication failure

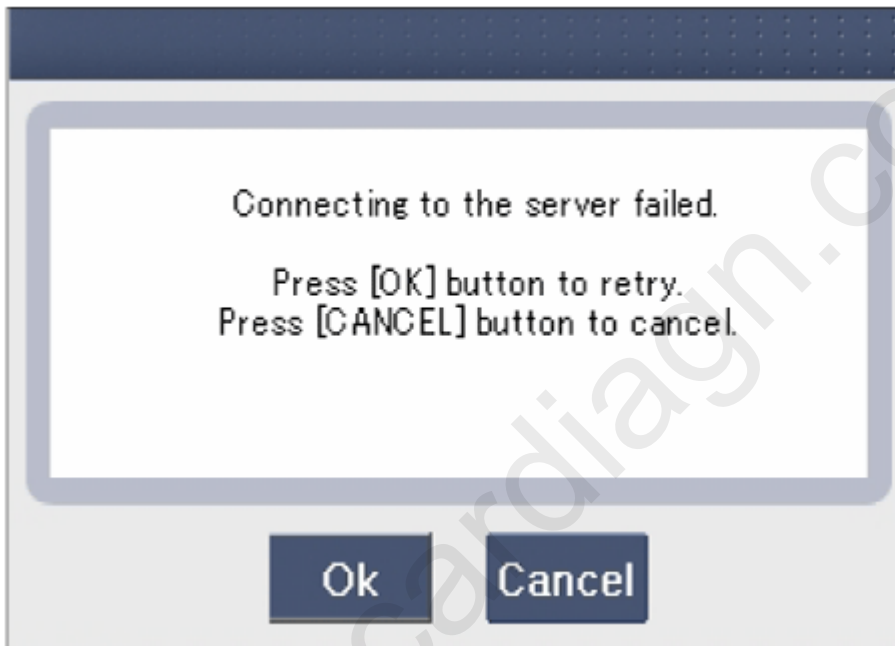


Fig.7

## ■ Offline method on KDS (When internet connection is unavailable)

1) Initial ACU Variant Coding

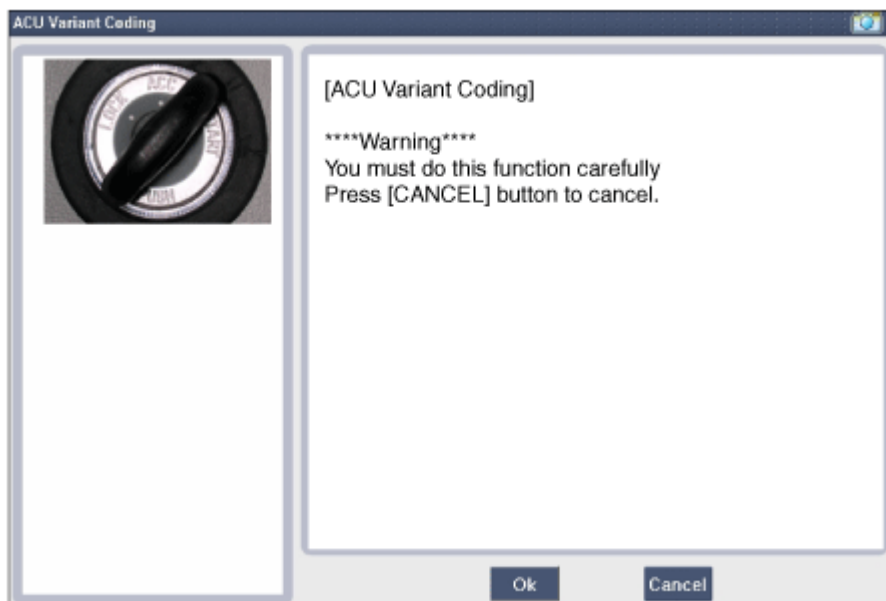


Fig.1

2) Enter ACU Coding Code

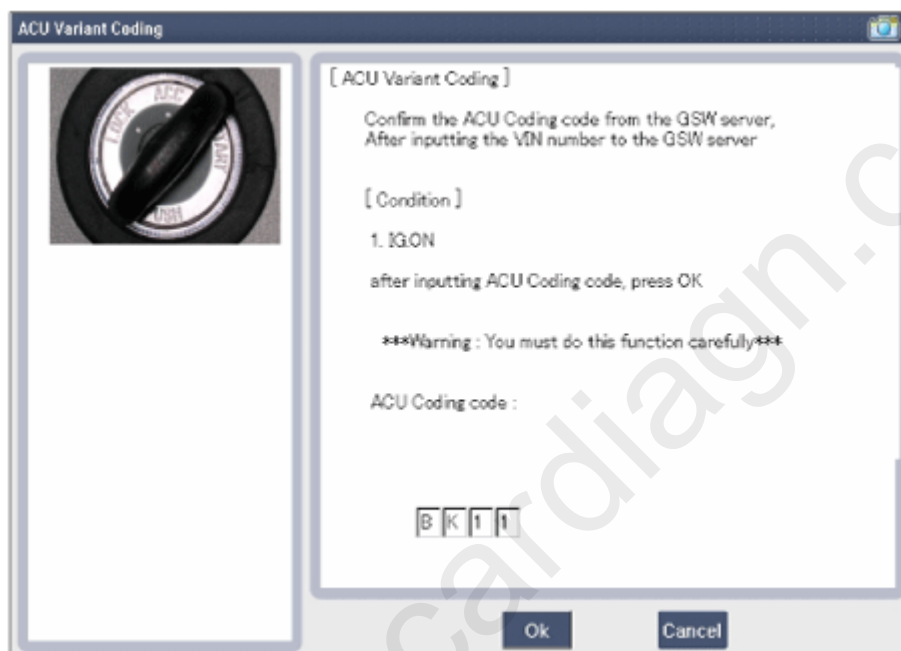


Fig.2

3) Recheck ACU Coding code

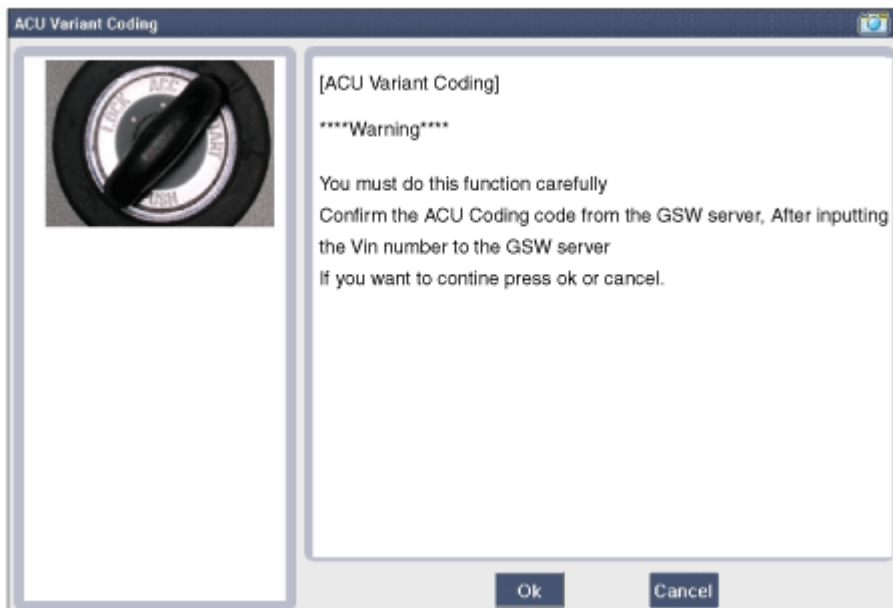


Fig.3

4) Processing variant coding - 1

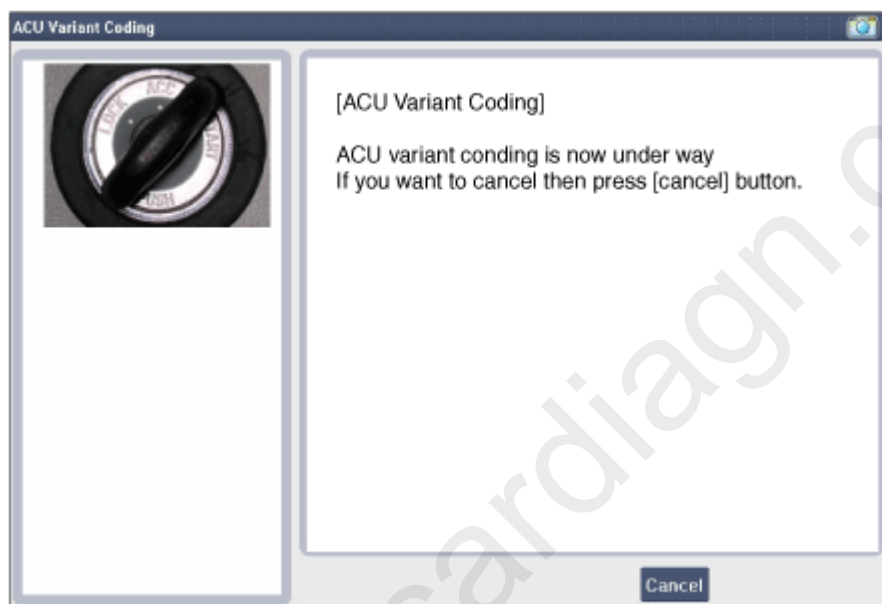


Fig.4

5) Processing variant coding - 2

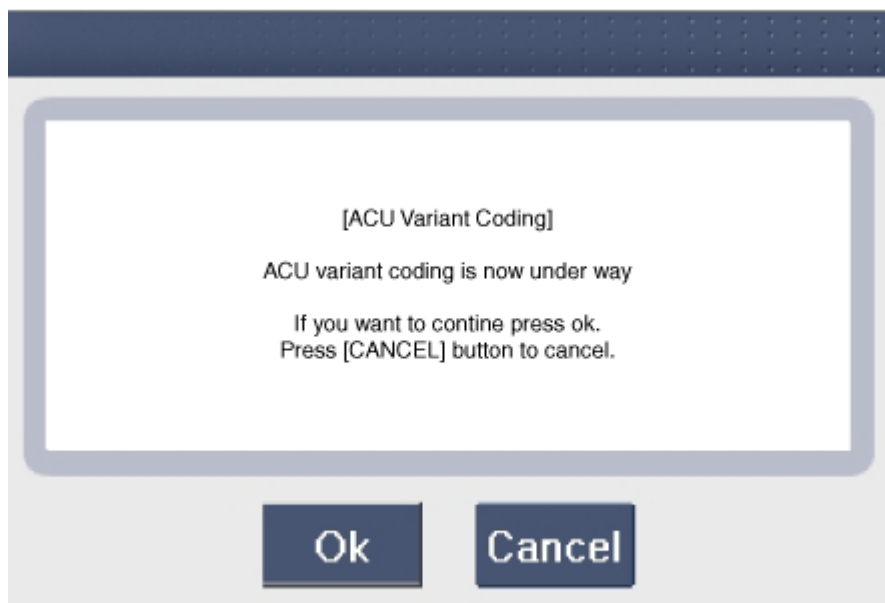


Fig.5

6) Variant coding is completed

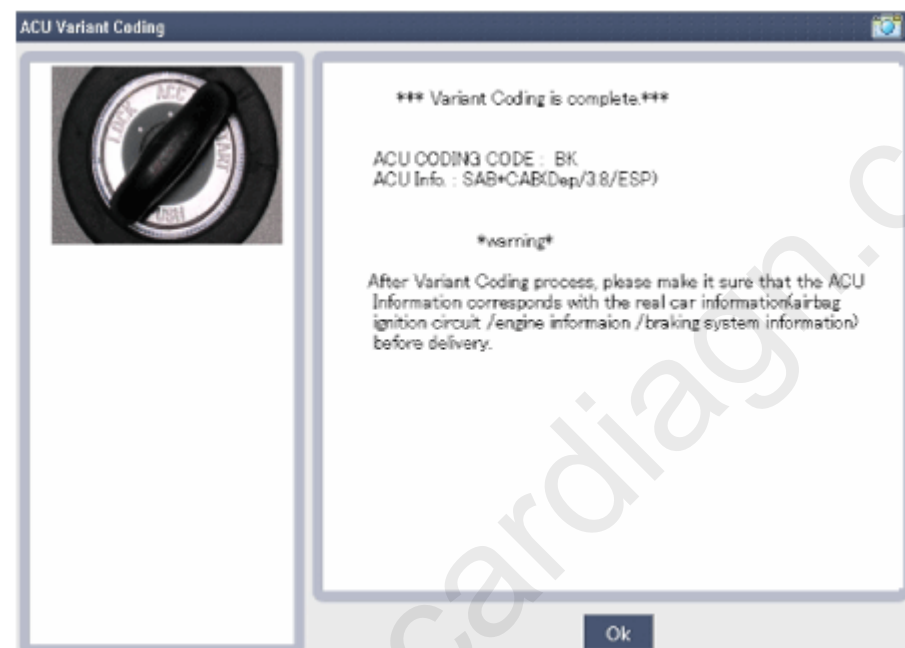


Fig.6

#### NOTICE

This screen is displayed when the variant coding is attempted again on the SRSCM that has already performed variant coding.

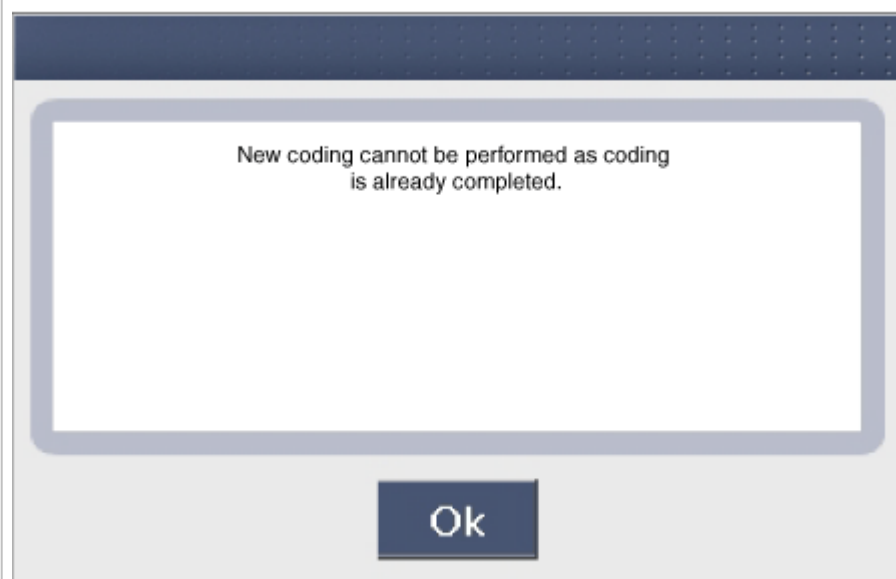


Fig.7

\* Thanks for your cooperation for the more quality. Please surely rate this document before closing.

cardiagn.com